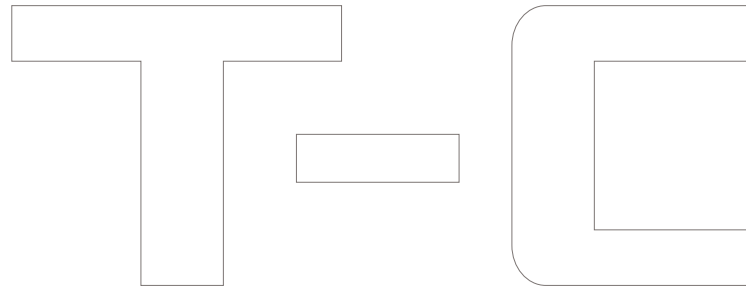


# Control Consoles **T-ONE**



**RGBlink®**

# T-ONE



Take control of large events with T-ONE, putting full power of control with the programmer and operator. T-ONE features an integrated 14in LCD touch screen front and centre, with an impressive number of illuminated keys, dynamically lit and many with dedicated electronic legends for superior visibility.

Connect X3 or X7 processors to T-ONE enabling hands on remote control, utilising the power of the RGBlink XPOSE platform. T-ONE is XPOSE with console surface. This enables fluid and demand based actions like never before when using compatible universal processors.

Positioning and sizing layers and outputs and other features can be achieved in a manner that is most familiar to the user, whether via touch screen, keypad or precision joystick.

From programming layouts to controlling live, T-ONE is intuitive and opens up a wide range of possibilities in new ways.



# T-ONE



## Presets

Load presets into preset banks, accessing with dedicated page controls. Illuminated buttons provide not only immediate access but also coloured feedback indicating status.

## Functions

Assign functions dynamical to illuminated keys. Electronic legends above each key show the assigned function. Page controls allow an even greater number of functions to be easily accessible from the console is required.

## Input, Layer & Output

Three sets of 16 individually illuminated keys, all with separate electronic LCD displays above can be assigned specific inputs, layers and outputs for immediate selection and access. Key colours indicate the current status of the assigned attribute. For access to additional attributes, Page keys are provided for each section also.

## Connectivity

At the heart of T-ONE is connecting one or more universal processors for remote and tactile control.

T-ONE supports connection of up to four X3 processors or a single 32x32 X7 processor.

Universal processors may be connected via a LAN/ethernet connection, or via USB or serial, offering a wide range of choices to users.



## Synchronised Control

All connectivity and video is synchronised whether single or multi device systems. T-ONE brings together not only live control, but also enables large scale control.

## Multi-Touch Display

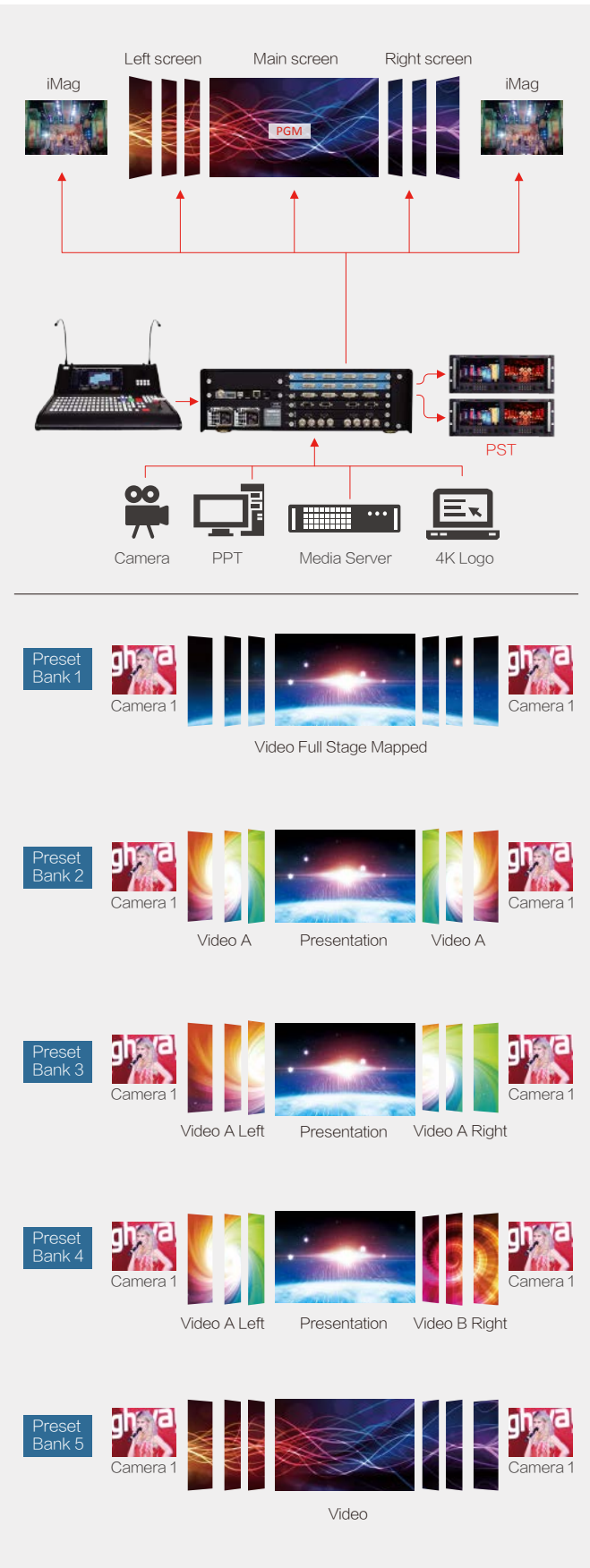
T-One features a interactive LCD display where the RGBlink XPOSE app platform comes to life. XPOSE is embedded in T-ONE offering the full set of features and allowing users to operate and control in the most natural way.

## Precision Controls

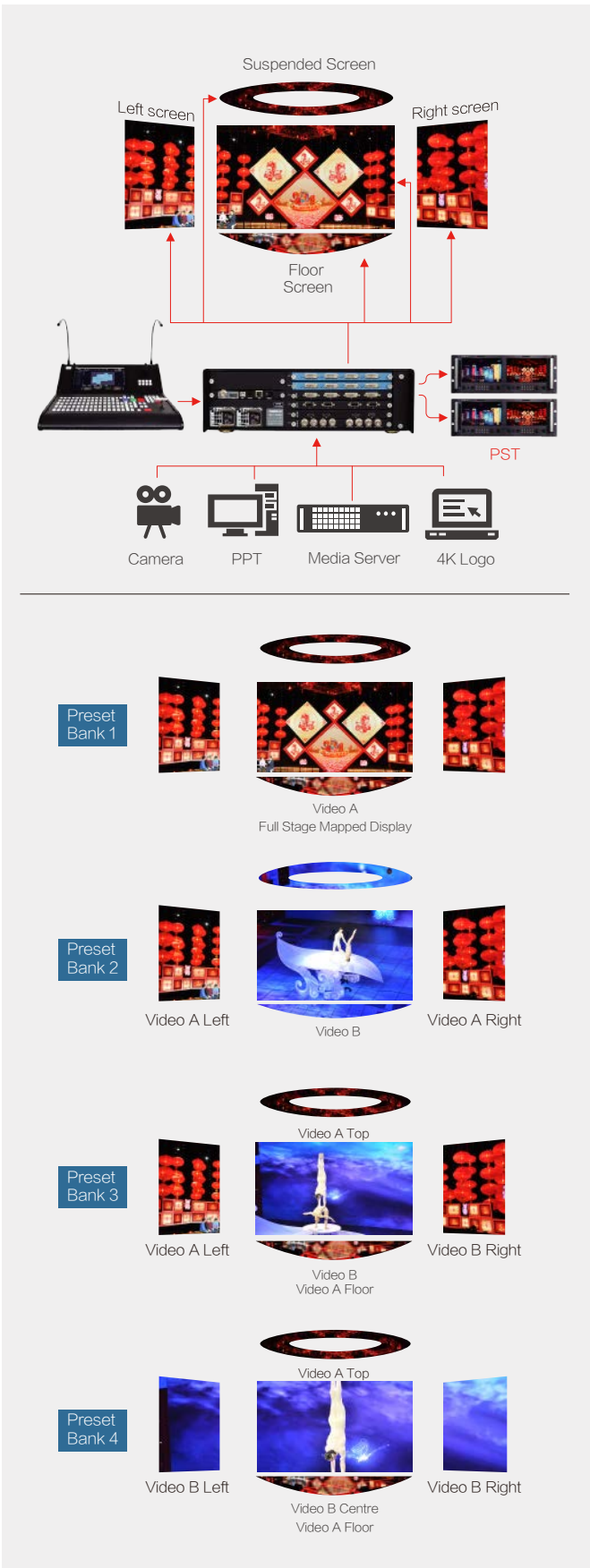
Dedicated numeric keypad and XYZ high precision joystick are just two of the control surface features included to assist operators. The interfaces provide fast, fluid and accurate settings from resolution, sizing and positioning, across a host of settings.

# Application Examples

## Large Stage Event



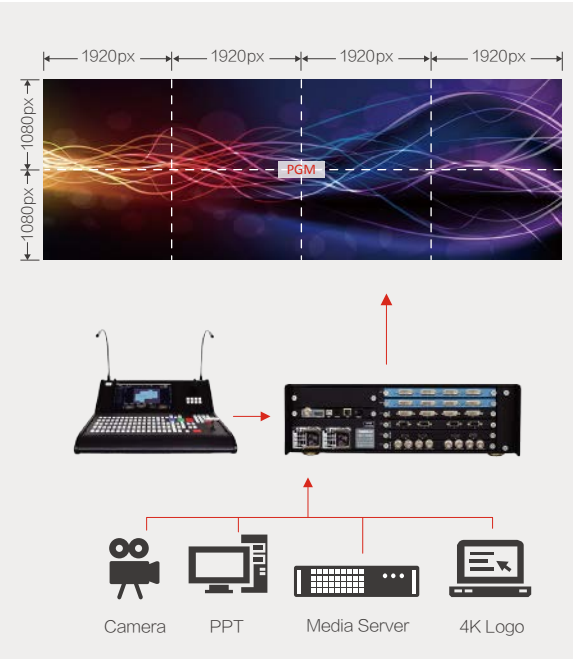
## Large Concert Event



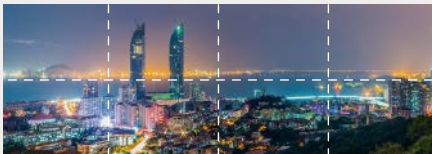


# Application Examples

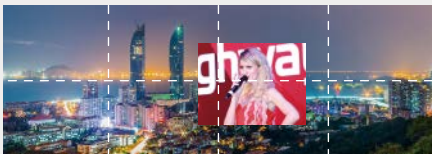
## 16 Mega Pixel Big Screen



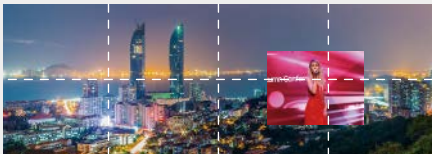
Preset Bank 1



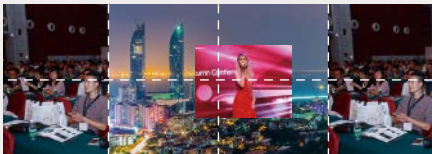
Preset Bank 2



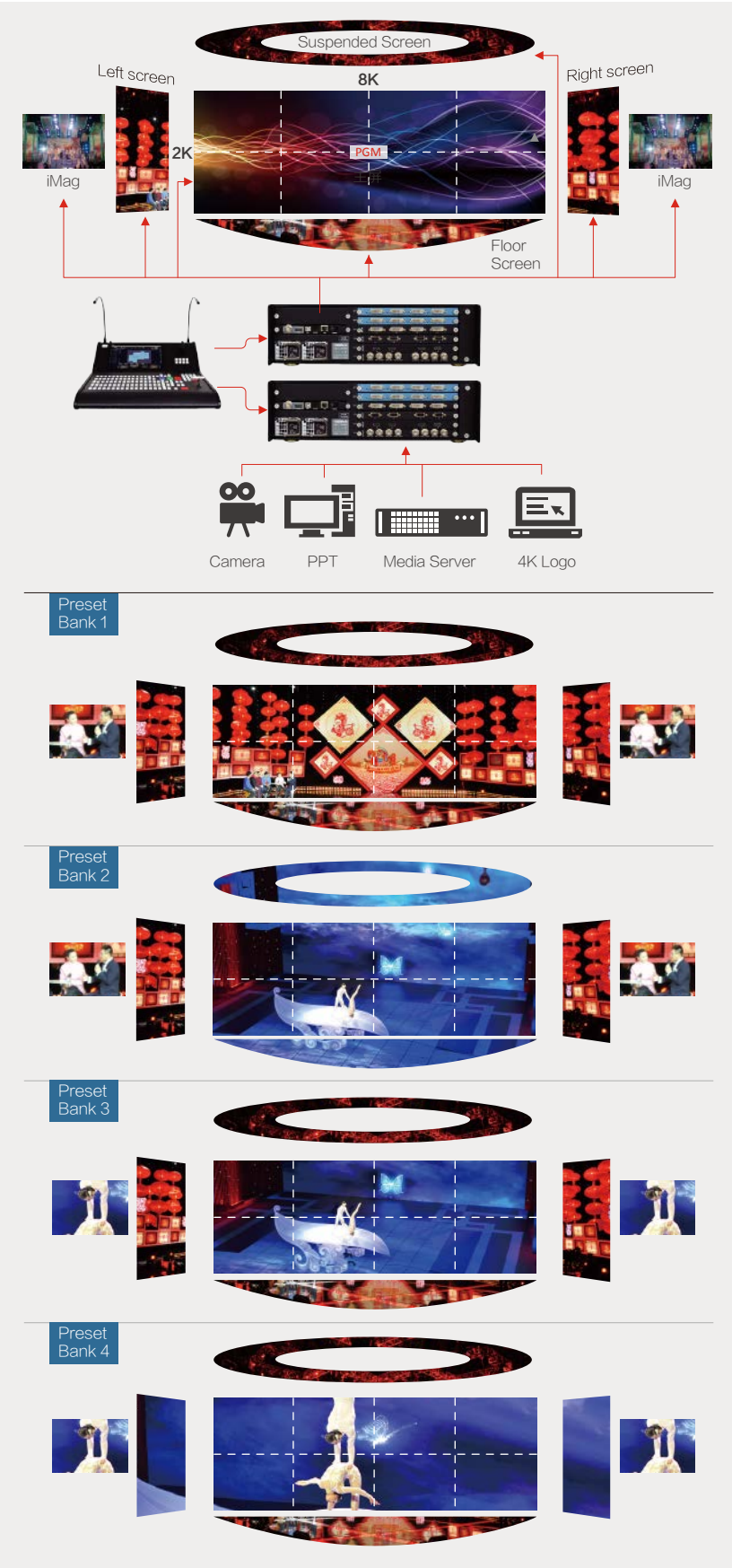
Preset Bank 3



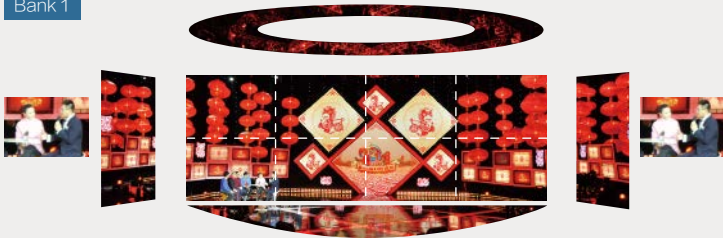
Preset Bank 4



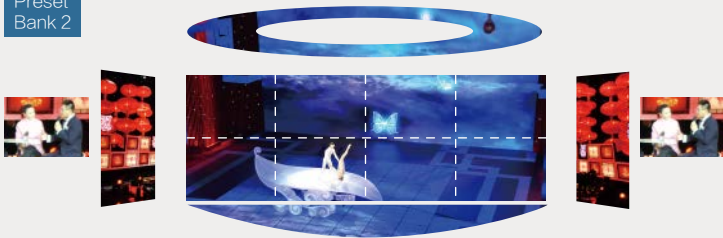
## Multi Device System



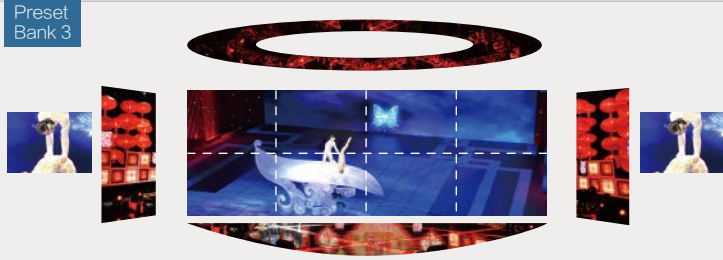
Preset Bank 1



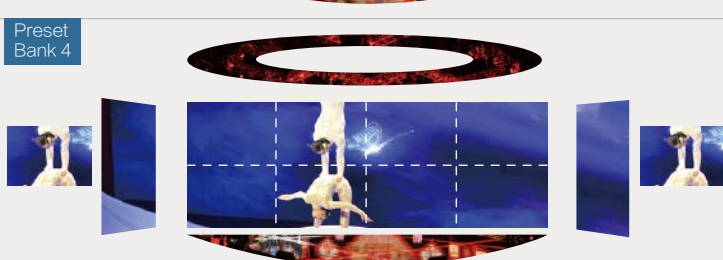
Preset Bank 2

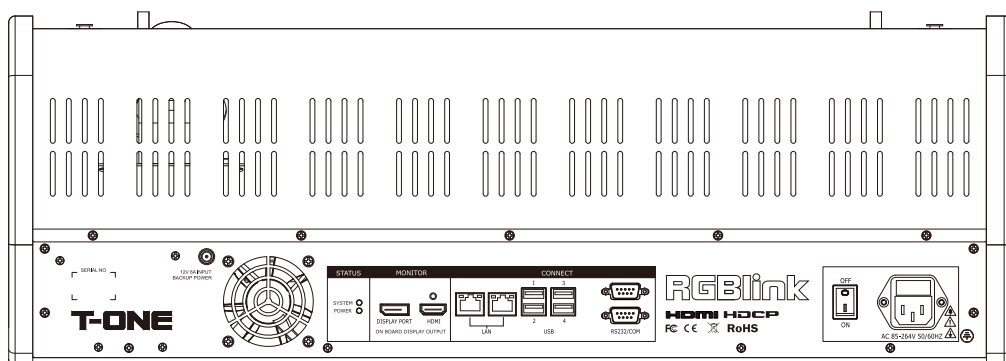


Preset Bank 3



Preset Bank 4

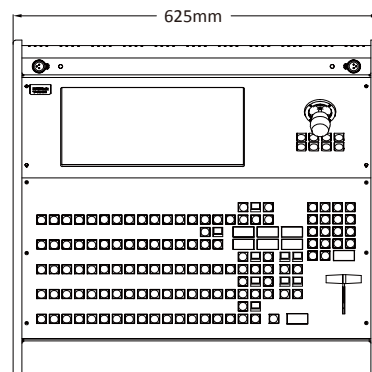
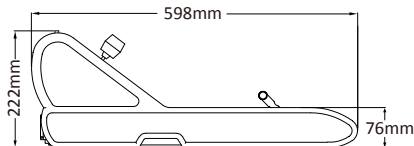
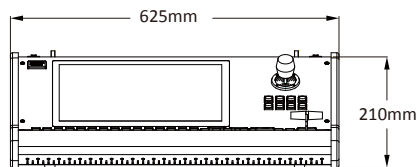




## Specifications

Features	Connectivity	Remote control for up to four X3 or one X7 universal processor	
	Display	14" Multi Touch LCD	
	Joystick	Precision Joystick with XY and Z axis control, self-centring	
	T-Bar	Mixing/Transition control	
	Buttons	Tactile illuminations buttons for key features and attributes. Assignable buttons with LCD electronic legending Dedicated numeric pad	
	Desk Lamps	2 positions (gooseneck lamps sold separately)	
Connectors	Connect/Control	2 x RJ45	LAN/Ethernet
		4 x USB A	USB
		2 x D-SUB 15	Serial
	External Display	1 x DisplayPort	
	Monitor	1 x HDMI	
	Desk Lamp	2 x 3pin XLR	
Power	Power	1 x IEC	
		1 x 5.4mm DC Socket	
	Mains Input	AC 85~264V 50/60Hz	
	Input Back Up	12V 5A	
Operation	Max Power	205W	
	Temperature	-25°C ~ 90°C	
Physical	Humidity	10% ~ 90% RH	
	Dimensions	625mm x 598mm x 227mm	T--ONE
		620mm x 668mm x 350mm	Flightcase
	Weight	16kg	T-ONE
		35kg	Packed in Flightcase

## Dimensions



## Ordering Codes

Product Code	Item
250-0001-01-0	T-ONE Remote Console

WEB: [www.rgblink.com](http://www.rgblink.com) EMAIL: [sales@rgblink.com](mailto:sales@rgblink.com) PHONE: +86 592 5771197  
Proudly designed and manufactured in **Xiamen** Hi Technology Zone, China

**RGBlink**®



[www.rgblink.com](http://www.rgblink.com)